

Our Land is Our Heart



MINING SITUATION IN NAMOSI

Protecting Our Land and Heritage



BULA

&

おはよう

By Lomani Au Maroroi Au (LAMA)

Purpose of the Presentation

To discuss the Current Mining Situation and the Stance taken by the Landowners and the People in the Districts of Waidina, Namosi and Wainikoroiluva in which the Mining Project will take place.

Our Land is Our Heart



Introduction

Overview of Namosi

- Namosi is one of Fiji's fourteen provinces and is located on Viti Levu, the largest island in Fiji.
- It is situated to the west of Suva, the capital city, covering an area of approximately 570 square kilometers.
- Namosi is known for its rugged terrain and scenic beauty, with elevations ranging from 150 to 1,000 meters above sea level.
- Its population is the second smallest of any Fijian province
- The province is characterized by its steep slopes and rich biodiversity
- The region receives high rainfall, ranging from 250 to 500 centimeters per year, supporting lush forests and diverse ecosystems
- home to a wide variety of plant and animal species, some of which are rare or endemic to Namosi.
- Namosi is also culturally significant, with a strong connection to traditional Fijian land-use systems and agroforestry practices

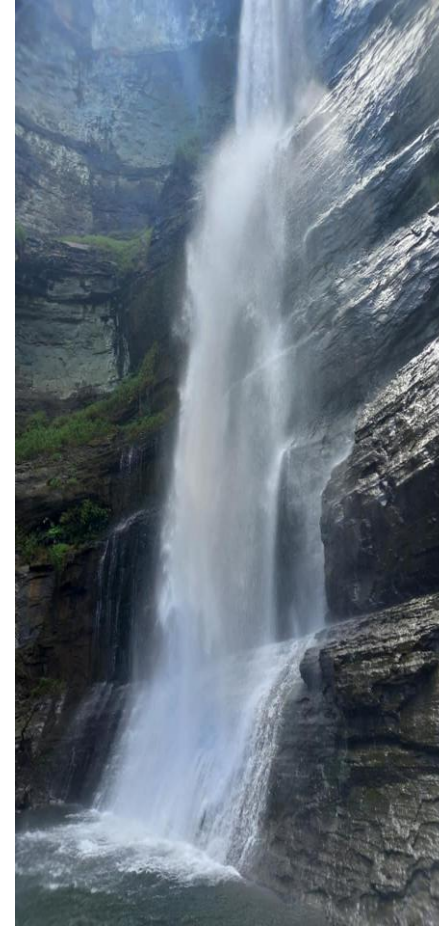


Cultural Significance of Namosi

Traditional Land-Use Systems: We the people of Namosi have a long history of sustainable land management and agroforestry practices. We grow root crops, vegetables, and fruits using traditional methods that maintain soil fertility and biodiversity.

Community Values: Our community highly values our connection to the land and the Environment. This connection is reflected in our customs, rituals, and traditional knowledge passed down through generations.

Heritage Sites: Namosi is home to several heritage sites, including ancient village sites, cultural landmarks, and sacred groves that hold historical and spiritual significance for us.



"Our voices will not be silenced, and our rights will not be trampled upon"

Environmental Significance of Namosi

Biodiversity: Namosi boasts a rich biodiversity, with a variety of flora and fauna, including several endemic species. The region's forests are home to unique plant species and a diverse range of wildlife, making it an important area for conservation.

Sovi Basin Conservation Area: The Sovi Basin is one of Fiji's most important forest conservation areas. It is recognized for its ecological value, providing habitat for numerous species and playing a crucial role in maintaining ecological balance.

Water Resources: Namosi's rivers and streams are vital for the local ecosystem and communities. They provide water for agriculture, drinking, and other essential activities. Protecting these water resources is crucial for sustaining the region's natural and human populations.



"Our land is our heritage, our culture, and our identity. Protecting it is not just our right, but our duty."

The history of prospecting in Namosi, Fiji, is quite eventful:

- **Early Exploration:** Known as the Waisoi prospect, the area has been recognized for its mineral potential since the 1930s. Detailed exploration began in 1968, targeting the Waisoi East and West prospects.

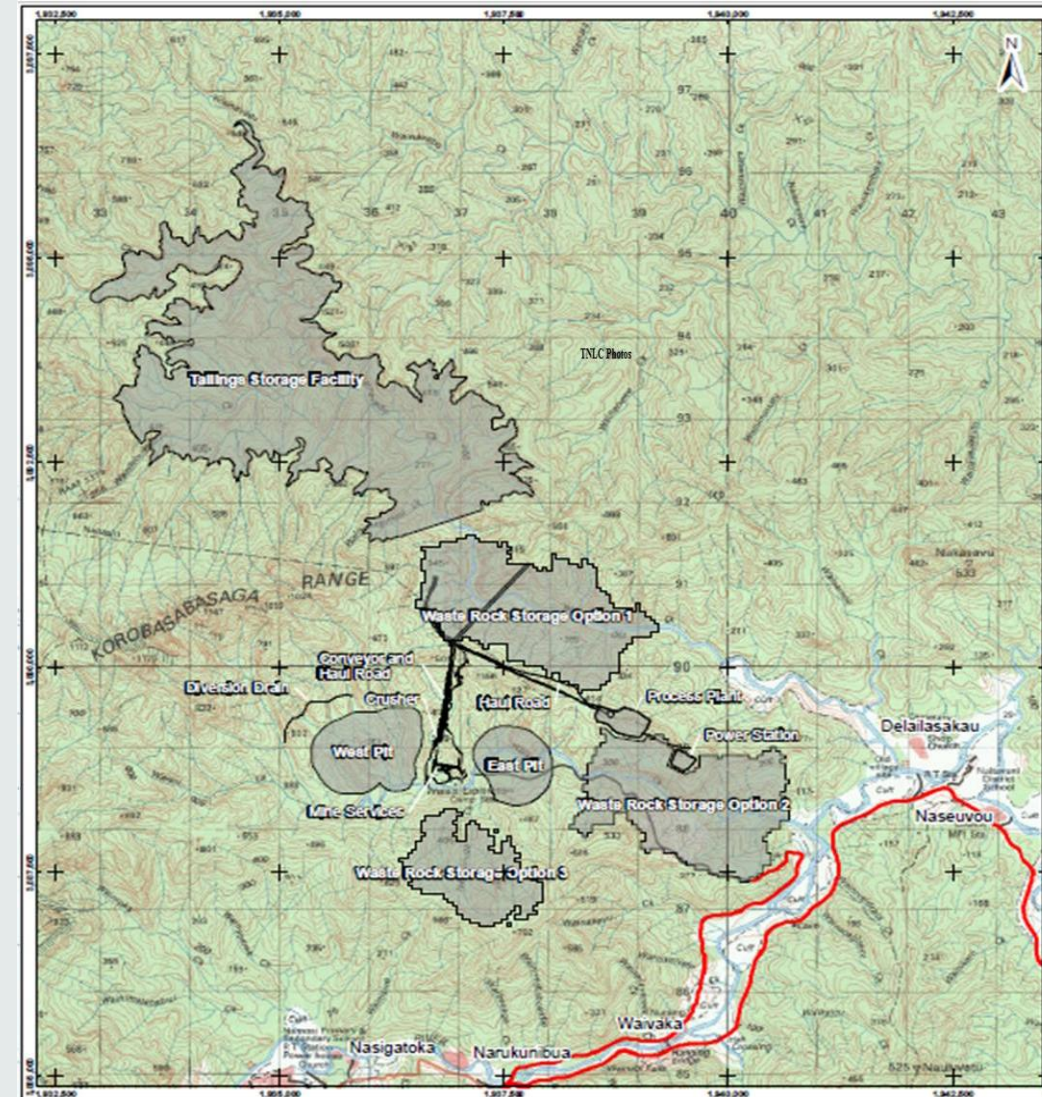
- **Various Companies:** Over the years, several companies held exploration rights in Namosi, including Viti Copper, Placer Pacific, WMC, AMAX/CRA, and Nitetsu.

- **Namosi Joint Venture (NJV):** In 2008, the Namosi Joint Venture, a collaboration between Newcrest Mining Ltd (Australia), Materials Investments (Fiji), and Nitetsu Mining Co. Ltd (Japan), took over the exploration rights

- **Exploration Activities:** The NJV has been conducting mineral exploratory works since 2009, focusing on assessing the potential for future mining activities. However, no mining has taken place in Namosi yet

Background

Historical Context



DETAILS OF NJV's MINING PLAN



NAMOSI JOINT VENTURE



Fact Sheet

About the Namosi Joint Venture

Na veika e baleta na kabani na Namosi Joint Venture

The Namosi Joint Venture (NJV) is a group of three companies who have come together to explore for and potentially mine mineral resources in the Namosi and Naitasiri provinces.

The NJV has been granted a Special Prospecting Licence (SPL 1420) by the Government to explore for minerals in the Namosi region west of Suva.

The NJV is made up of:

- Newcrest Mining Limited (70.67%) - A gold producer in Australia, the Pacific and Asia
- Mitsubishi Materials Corporation (27.33%) - Japanese materials company with world-wide activities
- Nittetsu Mining Co. Limited (2%) - Japanese mining company currently working in Japan, Chile, Fiji and South East Asia.

Newcrest is the operator and manager of the NJV.

The NJV is committed to working directly with the local community and other stakeholders.

Na kabani oqo na Namosi Joint Venture (e kilai talega me NJV) e umani vata kina e tolu na kabani ka ratou sa duavata ena kena dikevi na yau bula e loma ni qele mai na loma ni yasana vakaturaga ko Namosi kei Naitasiri.

E sa vakadonuya oti na matanitu kina NJV na laiseni (SPL 1420) me qarava kina na cakacaka ni vakadidike ena loma ni yasana vakaturaga o Namosi ka tiko ena ra kei Suva.

Sa iratou qo na kabani ka ratou lewena na NJV

- Na Newcrest Mining Limited (70.67%) - dua vei ira na kabani ena buli koula mai Ositerelia, Pasifika kei na veimatanitu vaka Esia
- Mitsubishi Materials Corporation (27.33%) - kabani ni Javani ka qarava e vica vata na tabana ni veiqaravi

Na Nittetsu Mining Company Limited (2%) - kabani ni keli vatu talei mai Javani ka ratou qaravi cakacaka tiko ena gauna oqo e Javani, Chile, Viti kei na Ceva i cake kei Esia.

Na kabani na Newcrest e cicivaka ka manidia taka talega na NJV.

E dei na NJV me cakacaka vakadodonu se veivolekati sara kei keda na lewenivanua kei na veitabana eso era vakaitavi ena cakacaka qo.

SHAREHOLDERS

The NJV is made up of:

- Newcrest Mining Limited (70.67%) - A gold producer in Australia, the Pacific and Asia
- Mitsubishi Materials Corporation (27.33%) - Japanese materials company with world-wide activities
- Nittetsu Mining Co. Limited (2%) - Japanese mining company currently working in Japan, Chile, Fiji and South East Asia.

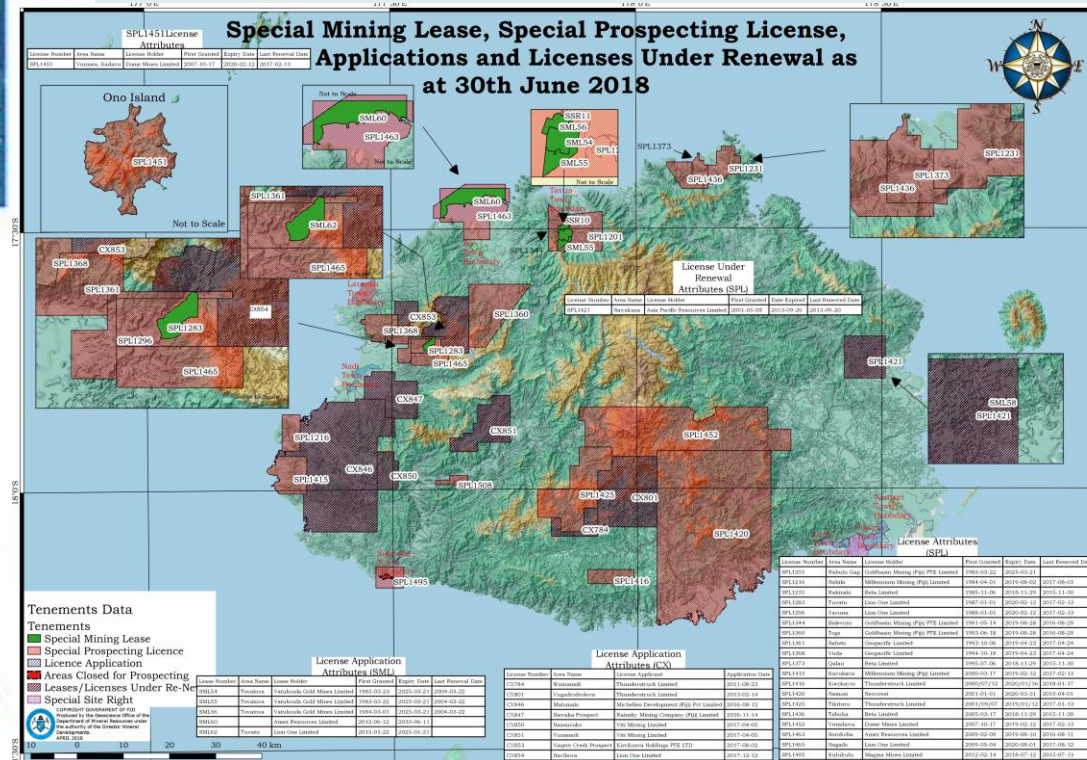
Waisoi Project Information

November 2011



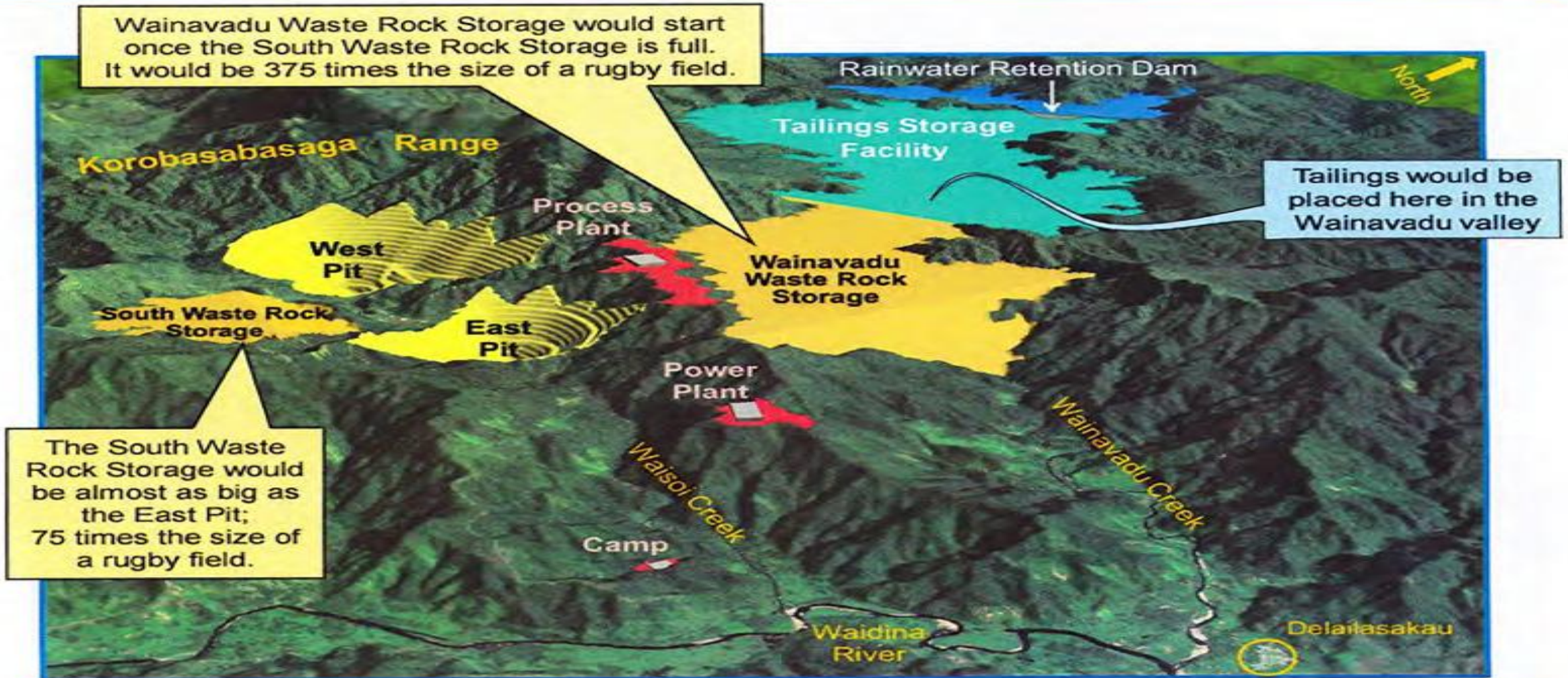
Fig.1

Location map of Namosi Joint Venture



- The Waisoi Project is a copper project in the exploration phase located in the Namosi and Naitasiri provinces, approximately 30 kilometres northwest of Suva.
- The Namosi Joint Venture (NJV) is operated by Newcrest Mining Limited (70%), Mitsubishi Materials Corporation (28%) and Nittetsu Mining Co., Ltd (2%).
- The NJV is doing an Environmental Impact Assessment to see if a proposed mine could be developed at Waisoi.

DETAILS OF THE SIZES OF PITS & STORAGE AREAS



Detailed surface water studies are underway to assess the potential for rainfall overflow from the Tailings Storage Facility during large rainfall events such as cyclones. Tailings Storage Facility storm event study outcomes will be provided in the Environmental Impact Assessment report. NJV will return to the communities to provide study updates as we progress.

CURRENT SITUATION (LANDOWNERS, NJV & GOVERNMENT)



NO TO MINNING
ALL FORMS OF MINNING
MUSTACH EARTH
OCEAN

NO TESTING
IN MY WAITU

NO TESTING
IN MY SOLWARA

NO TESTING
IN MY SOLWARA

NO TESTING
IN MY SOLWARA

CURRENT STATUS - LANDOWNERS

News

Namosi landowners object to NJV license renewal



Sainiani Boila
Multimedia Journalist
Sainiani.Boila@fbc.com.fj

AUGUST 9, 2023 4:30 PM



Landowners from the District of Namosi have presented a letter to the Office of the Prime Minister, urging assistance in halting mining exploration within the Namosi Joint Venture.

The envelope that contains the letter has the words "Objection to Renewal of License SPL1420" written on it.

Namosi village landowner Ratu Imanueli Matanitobu states that this initiative has environmental and social repercussions.

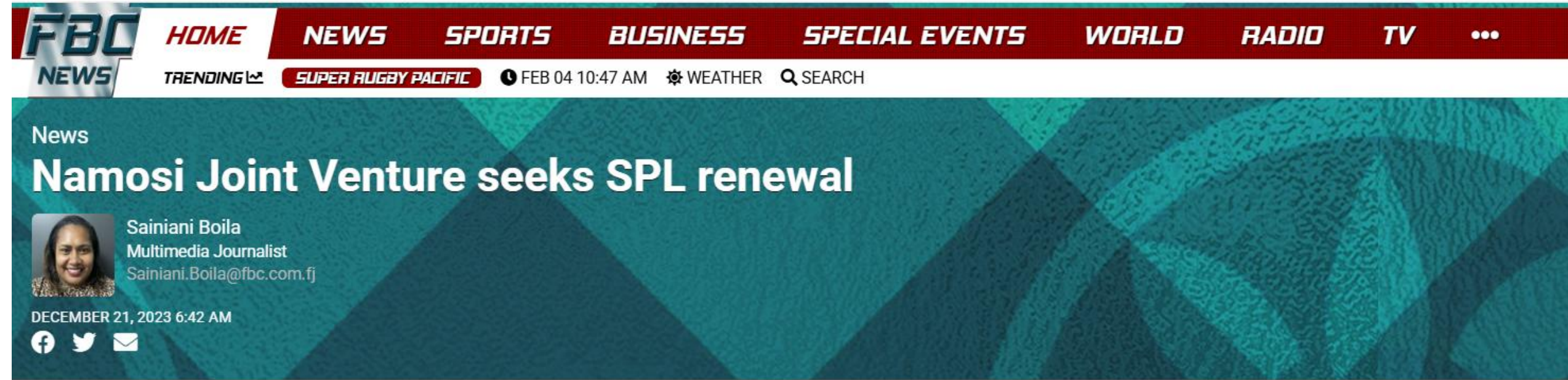
ARTICLE CONTINUES AFTER ADVERTISEMENT



OBJECTION TO LICENSE RENEWAL



CURRENT STATUS - NJV



The screenshot shows the top navigation bar of the FBC News website. The navigation menu includes: HOME, NEWS, SPORTS, BUSINESS, SPECIAL EVENTS, WORLD, RADIO, TV, and a menu icon. Below the navigation bar, there is a secondary bar with 'TRENDING' (with a small icon), 'SUPER RUGBY PACIFIC', a clock icon showing 'FEB 04 10:47 AM', a gear icon for 'WEATHER', and a magnifying glass icon for 'SEARCH'. The main content area has a teal background with a geometric pattern. The word 'News' is in the top left. The main headline is 'Namosi Joint Venture seeks SPL renewal'. To the left of the headline is a profile picture of Sainiani Boila, a Multimedia Journalist, with her email 'Sainiani.Boila@fbc.com.fj'. Below the headline is the date and time 'DECEMBER 21, 2023 6:42 AM' and three social media icons: Facebook, Twitter, and Email.

The Namosi Joint Venture has formally requested the renewal of its Special Prospecting License for an additional three years.

The SPL, which is currently on hold by the Ministry of Lands and Mineral Resources, allows NJV to explore the potential for establishing a copper mine in the Namosi region.

Minister for Lands and Mineral Resources Filimoni Vosarogo confirms the NJV's request and states that, according to the venture, this extension would serve as the final three years to make a decision on whether to proceed with mining in Namosi.



CURRENT STATUS - GOVERNMENT

News

Vosarogo apologizes for delay in Namosi Joint Venture meeting



Sainiani Boila
Multimedia Journalist
Sainiani.Boila@fbc.com.fj

DECEMBER 20, 2023 12:30 PM



Minister for Lands and Mineral Resources Filimoni Vosarogo has issued an apology to the Vanua o Nabukebuke for the delay in convening a meeting to address concerns related to the Namosi Joint Venture issue.

During a meeting at the Namosi Provincial Council House in Navua this morning, Vosarogo expressed regret over the previously unsuccessful attempts to organize the meeting, citing various reasons for the delays.

Vosarogo assured the landowners that the Ministry is now fully prepared to listen to their perspectives before making any final decisions.



NAMOSI JOINT VENTURE (NJV)/GOVERNMENT

STRATEGY USED

NAMOSI MINE PROJECT

- 2 Open Cut Mines 75 Times the Size of a rugby field
- Creates employment and huge benefits
- LANDOWNERS REFUSE – Protect the Environment & the People
- Social and Environmental Impacts VS Benefits ??

NAMOSI HYDRO PROJECT

- Power the Namosi Mine Project (AIFFP)
- Powers the East and West of Fiji (AIFFP)
- 50 Megawatts
- Creates Employment and Other Benefits
- LANDOWNERS REFUSE

HYDRO FOR THE MINE

Shareholders

- **Government of Fiji:** The major shareholder, holding 51% of the shares
- **Domestic electricity account holders:** Hold 5% of the shares in the form of non-voting shares
- **Sevens Pacific Pte Limited:** Holds 44% of the shares

Sevens is a joint venture company established in Singapore comprising of a partnership between the Japanese company Chugoku Electric Power Company Limited (Chugoku) and the Japan Bank of International Cooperation (JBIC).

Sevens Pacific Pte Limited acquires 44 percent of EFL shares

By Naveel Krishant



Wednesday 09/06/2021



Prime Minister Voreqe Bainimarama [Image: Government]

Prime Minister Voreqe Bainimarama today announced an agreement on the sale of 44% shares of Energy Fiji Ltd to Sevens Pacific Pte Limited today.

Sevens is a joint venture company established in Singapore comprising of a partnership between the Japanese company Chugoku Electric Power Company Limited (Chugoku) and the Japan Bank of International Cooperation (JBIC).

While speaking during the MOU signing, Bainimarama says the Fijian Government had always aimed to secure a strategic investor in EFL who would align Fiji's energy sector to international best practices and ensure the long-term development of robust renewable energy programs.

CURRENT SITUATION - HYDRO FOR THE MINE

Villagers of Navunikabi in Namosi held a protest against the planned construction of hydro dams by Energy Fiji Limited, just one kilometer from their village.



FBC
NEWS

AMRITA SAGAR

NEWS

Fri 04/10/2024

Study underway for
proposed Namosi
Hydro project

READ MORE

www.fbcnews.com.fj/news

FBC



Intimidation Tactics



Fiji News & Sports

Admin · 16h · 🌐



THREE INDIVIDUALS WERE QUESTIONED YESTERDAY REGARDING ALLEGATIONS OF UNLAWFUL ASSEMBLY

This follows the arrest of four members from the Namosi landowners committee, 'Lomani Au Maroroi Au' (LAMA), by Navua Police.




Chair Sipiriano Nariva stated that the members were peacefully protesting in Navunikabi Village to protect their land, and expressed confusion over the need for a permit for such actions.

Nariva emphasized that LAMA believes protecting one's land and people should not be criminalized. Chief of Crime ACP Mesake Waqa confirmed the questioning in relation to the incident.



News
Landowners questioned after unlawful assembly

 Praneeta Prakash
Multimedia Journalist
praneeta.prakash@fbc.com.fj

FEBRUARY 6, 2025 4:23 PM
  

Three people were brought in for questioning in relation to allegations of unlawful assembly yesterday.

Chief of Crime ACP Mesake Waqa confirmed this after the Landowners and Members of the Namosi landowners committee '*Lomani Au Maroroi Au*' expressed dissatisfaction regarding the recent apprehension of four of its members by police.

They were arrested by Navua Police yesterday.



CONCLUSION

**FIJI
GOVERNMENT**

**AUSTRALIAN
GOVERNMENT**

**NAMOSI JOINT
VENTURE
- Newcrest
Mitsubishi
Nitetsu**

**ENERGY FIJI
LTD (EFL)**

- Sevens Pty

LAMA



QUESTIONS??



WE NEED SUPPORT TO BE ABLE TO ACHIEVE OUR OBJECTIVE

